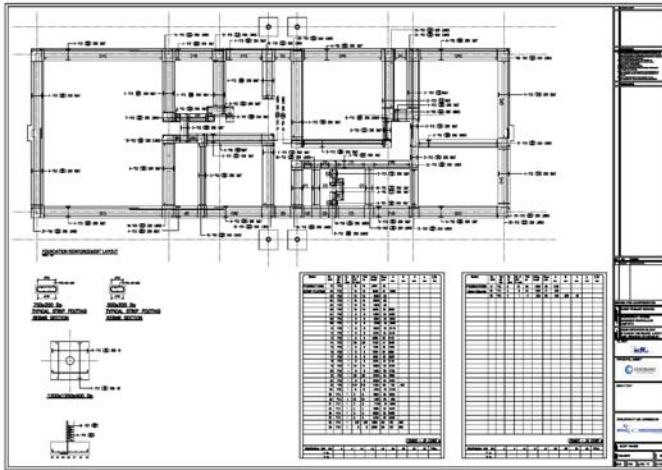


# PROJECT DATA SHEET

## Schools



<b>CLIENT</b>	: <b>IDT POLOKWANE</b>
<b>PROJECT</b>	: <b>CIVIL/STRUCTURAL ENGINEERING SERVICES FOR THE EMERGENCY AND STORM-DAMAGED SCHOOLS WITHIN BLOUBERG LOCAL MUNICIPALITY IN LIMPOPO PROVINCE</b>
<b>LOCATION</b>	: <b>BLOUBERG LOCAL MUNICIPALITY, LIMPOPO PROVINCE</b>
<b>VALUE</b>	: <b>R 29,2 million</b>
<b>COMPLETION</b>	: <b>JULY 2017</b>
<b>SCOPE OF SERVICE</b>	: <b>INVESTIGATION/ DESIGN/DOCUMENTATION/PROJECT MANAGEMENT &amp; CONSTRUCTION MONITORING</b>

### PROJECT DETAILS

Tlou Consulting (Pty) Ltd was appointed Civil and Structural Engineering Consultants for Construction and Rehabilitation of Storm damaged schools in Blouberg Local Municipality, Capricorn District in Limpopo Province. The appointment is for providing full services including supervision for the following schools: Kobe Primary School, Ragkari Secondary School, Mashilompana Primary School, Tswatsane Primary School, Manaka Primary School, Mamoshia Primary School, Schoongezicht Secondary School, Seobi Primary School, Mmantotole Primary School, Kgolouthwana Secondary School and Sepanya Primary School

The scope of work involved the construction of new buildings/blocks , including extensive to minor renovation and rehabilitation to storm damaged schools where identified.