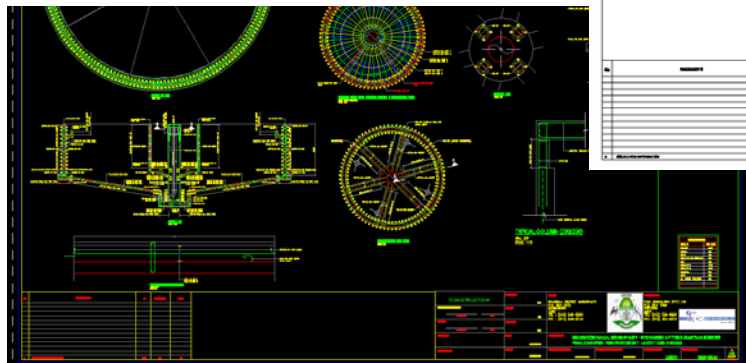
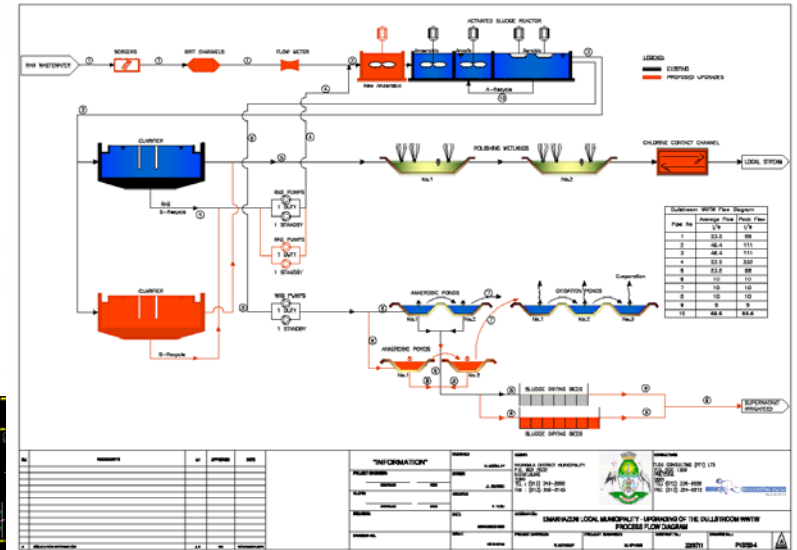


# PROJECT DATA SHEET

## Water Supply



<b>CLIENT</b>	: <b>NKANGALA DISTRICT MUNICIPALITY</b>
<b>PROJECT</b>	: <b>UPGRADING OF DULLSTROOM WWTW</b>
<b>LOCATION</b>	: <b>MPUMULANGA, EMAKHAZENI LOCAL MUNICIPALITY</b>
<b>VALUE</b>	: <b>R5,5 million</b>
<b>COMPLETION</b>	: <b>DECEMBER 2011</b>
<b>SCOPE OF SERVICE</b>	: <b>INVESTIGATION/ DESIGN/DOCUMENTATION/PROJECT MANAGEMENT &amp; CONSTRUCTION MONITORING</b>

### PROJECT DETAILS

Tlou Consulting (Pty) Ltd was appointed by the Nkangala District Municipality in November 2010 for the Upgrading of the Dullstroom Wastewater Treatment Works in the Emakhaseni Local Municipality. The plant is the only purification works serving Dullstroom which had a current design capacity of 1MI/d.

The scope of works was as follows:

- Upgrading and refurbishment of the existing capacity to 2 MI/d operating capacity.
- Renewal of the effluent discharge permit for the current operating scenario.
- Re-routing of the effluent discharge point to the Crocodile River.
- Drilling of boreholes for the monitoring of groundwater quality.
- Increasing of the fencing boundaries to cater for additional sludge drying beds.
- The application for a new licence to authorise effluent discharge to the Crocodile River.
- The compilation of an O&M manual which shall include inter alia the, identification of training requirements, the establishment of monitoring and control capabilities as well as health and safety compliance of the works.